



Realising Engineering

Bridging Technology And People



Aerospace



Automotive



Industrial

A CAD / CAE / PLM Service Company

www.enit-group.com

EniT Group

EniT Group was established with a vision of providing engineering and IT services to its customers by setting up EniT Design centers at strategic locations in Europe and India.

EniT Group companies cater to customer needs locally in Europe (Germany and UK) as well as provide cost advantage by providing support from its India Operations.



Powered by Ideas Driven by Culture

Our Motto

To continuously exceed customer expectation by delivering high quality services through competitive, motivated empowered employees.

*We bridge you with Right skills,
Right solutions at the Right time
with Right people to meet your objectives.*

EniT Management Principles

Welcome to EniT, A German group company founded by an Indian Engineer, aimed at offering high quality engineering services based on a global design delivery mechanism.

We are an Idea driven company, fueled by empowered engineers, delivering quality output right from the inception of the company. EniT is driven with a global mindset, laying emphasis on blending German methods, processes and quality coupled with Indian flexibility, teamwork, agility and quick learning.

I believe with our ability to identify talent, nurturing it and building competencies coupled with our expertise of best practices in global services industry, we will be successful in our mission of building a sustainable enterprise in the long run focussing on innovation, imbibing transparency, socially responsible management culture and ethics.

Founder & Director EniT Group
Girish JOIS



Philosophy driving us

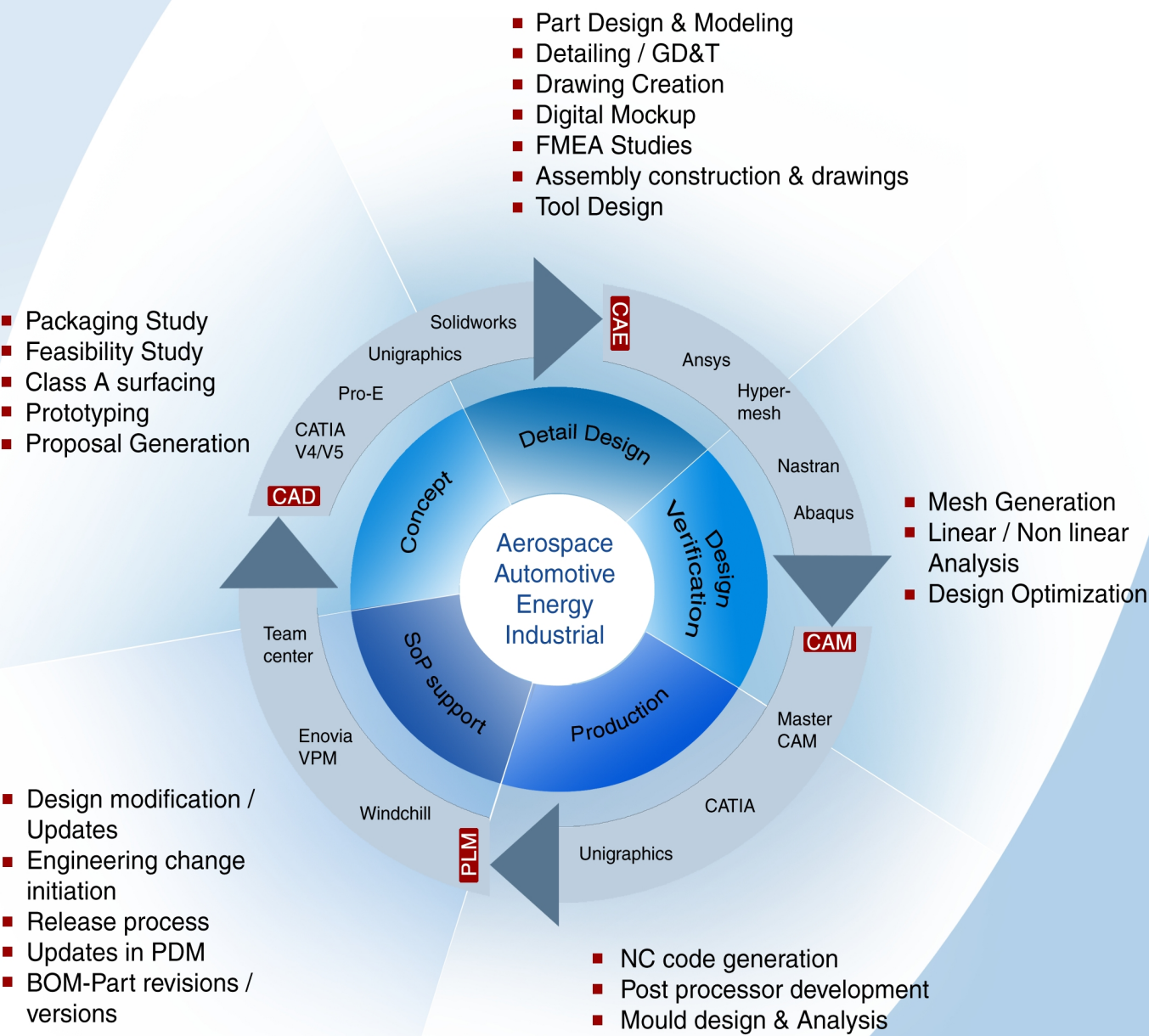
- **Visionary leadership**
We develop leaders with a vision to foresee changes and be proactive to change
- **Work is worship**
Execute individual duties with passion, dedication and commitment.
- **Strategic intent**
We believe in developing and nurturing core competencies leading to innovation.
- **Delegate and empower**
Delegate work to right persons with right skills, empowering them to achieve a common objective.
- **Blend cultures**
Being global is always important for us to blend between culture and bring in harmony to our operations.
- **Quality consciousness**
Quality is trust. We build trust by sustaining quality deliverables each time and every time. Consistency in Quality is a lifeline for our organization.

Together, we are local and we think Global.

EniT Profile

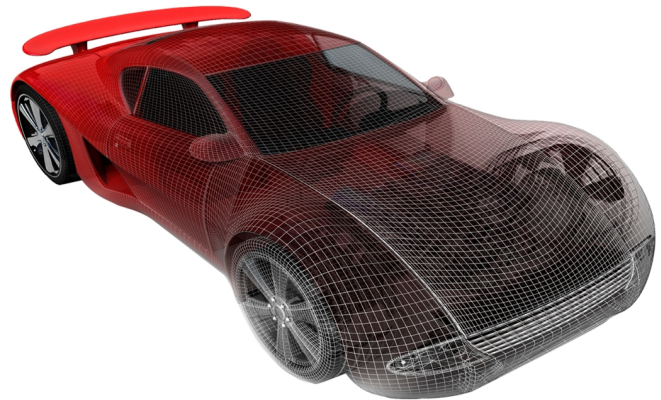
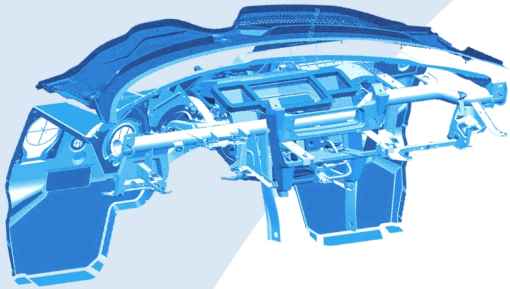
Our strengths in service areas

Through our expertise in working with CAD, CAE and PLM tools, we participate in entire life cycle of Product R&D activities.



Transforming Inputs into Innovation

EniT Technology Expertize



Computer Aided Design (CAD)

EniT possesses a highly skilled team of engineers, who can provide technical expertise in all the areas of product development such as

- Conceptual design
- Styling surface creation
- 3D Modeling
- Component drawing generation
- Process for Assembly
- DMU Analysis

Computer Aided Engineering (CAE)

EniT provides services in various areas of analysis such as:

- Mesh generation
- Load Analysis
- Structural Analysis
- Static and dynamic analysis
- Frequency response analysis

Product Lifecycle Management (PLM)

EniT possesses the right blend of skilled professionals with industry background and professionals for defining functional process definitions and supporting PLM product customization.

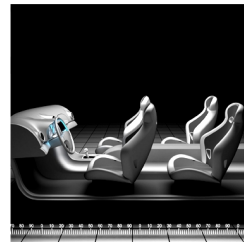
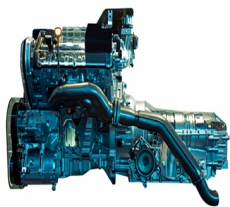
- Process Definition
- PLM Customization
- CAD Macro Development

EniT - Engineer's nature - Innovative Thinking.

EniT Automotive Expertise

Among the various subsystems, our group offers you solutions and services in the following fields.

- Body in White
- Power Train and Chassis systems
- Interiors and Exteriors
- Seating system
- Sealing system



Design Services

- Definition and modeling of styling surface
- Design of components
- 3D and 2D data creation using CAD tools
- Homologation and fit – finish drawing creation
- Data collection for new vehicle programs
- Packaging study
- Harness and Electrical routing
- Digital Mockup services

Analysis Services

- Component analysis
- Complete vehicle meshing and analysis
- Exteriors impact analysis
- Value Engineering and Value analysis
- Static, dynamic and thermal deformation analysis

PLM Services

- Functional process definition
- Process automation
- PLM product configuration & customization
- Macro development for CAD tools
- PLM product support
- PLM and CAD integration support

Self motivated, talented people are our biggest asset

EniT Aerospace Expertise

Our group leverages experience gained by our engineers working in aerospace domain to provide value added solutions to our customers.

Among the EniT groups, EniT GmbH and EniT solutions have been working for leading European Customers during past few years and have established an ongoing working relationship with them.

- Structures
- Electrical and Harness
- Interiors and seating
- Landing gear



Design Services

- Component design and modeling
- Assembly design and kinematics
- Component and Assembly drawing and manufacturing information
- Product concepts and optimization
- Electrical routing and installation
- Seating design and component modeling

Analysis Services

- Structural linear static and dynamic analysis
- Mass property analysis
- Frequency response analysis
- Fatigue analysis

PLM Services

- Aerospace industry process definition
- Workflow and lifecycle automation
- PLM product configuration & customization
- PLM product support
- PLM and CAD integration support

We at EniT, engineer your dreams into reality

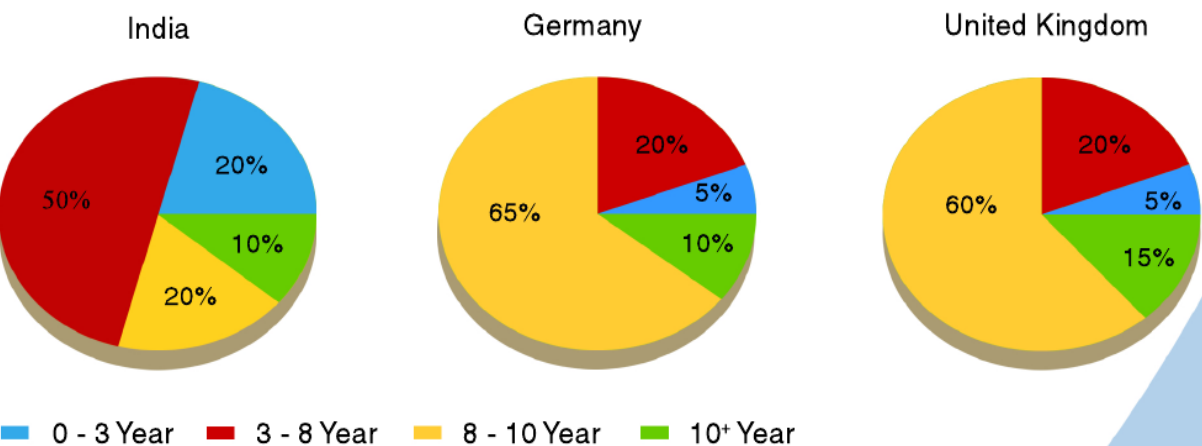
EniT Cultivates people

We believe our employees are the best ambassadors of our company.
They are

- Tool specialists** → Application specialists with engineering software product expertise.
- Domain experts** → Specialized in particular domain.
- Open Culture** → Our employees are flexible and open minded.



Experience Chart



Training hard to keep ahead

Our core engineering team comprises of professionals with industrial experience. Every EniT engineer undergoes regular training and mentoring by these experienced professionals in their respective domains.

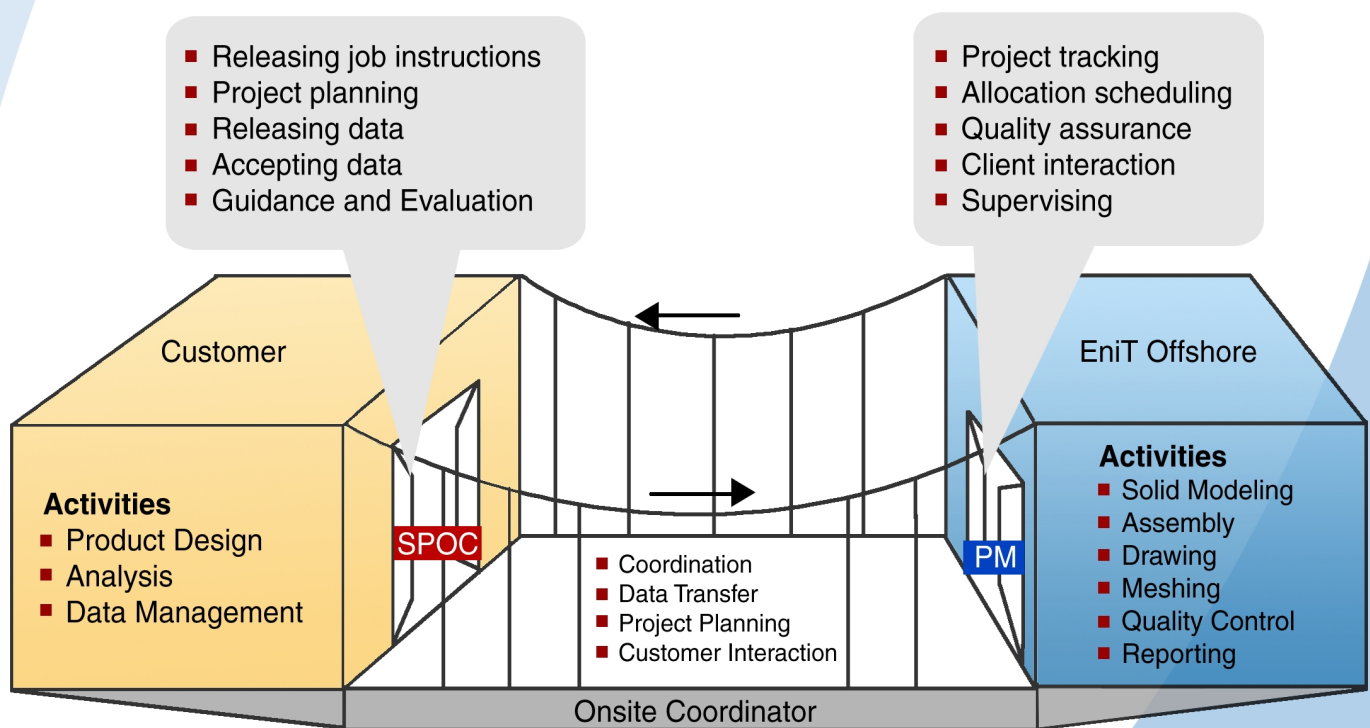
Our strength is our team.
Our agility is our team spirit.
Our achievement is our team bonding.

EniT Business Model

To cater to ever increasing challenge of cost reduction, outsourcing and improvement in productivity , we have positioned ourselves globally to meet your requirements. Our Engineers work at customer locations in Europe, execute work packages locally in Germany or in India. We have invested in Infrastructure and communication facility to meet your demands.

- **Staffing / Consulting** - EniT engineers located at customer place.
- **Near Shore** - EniT engineers working for customers at EniT design centres in Germany & UK.
- **Offshore** - EniT engineers working for customers at EniT design centre from India.

Overview of Onsite – Offshore Project Execution Model

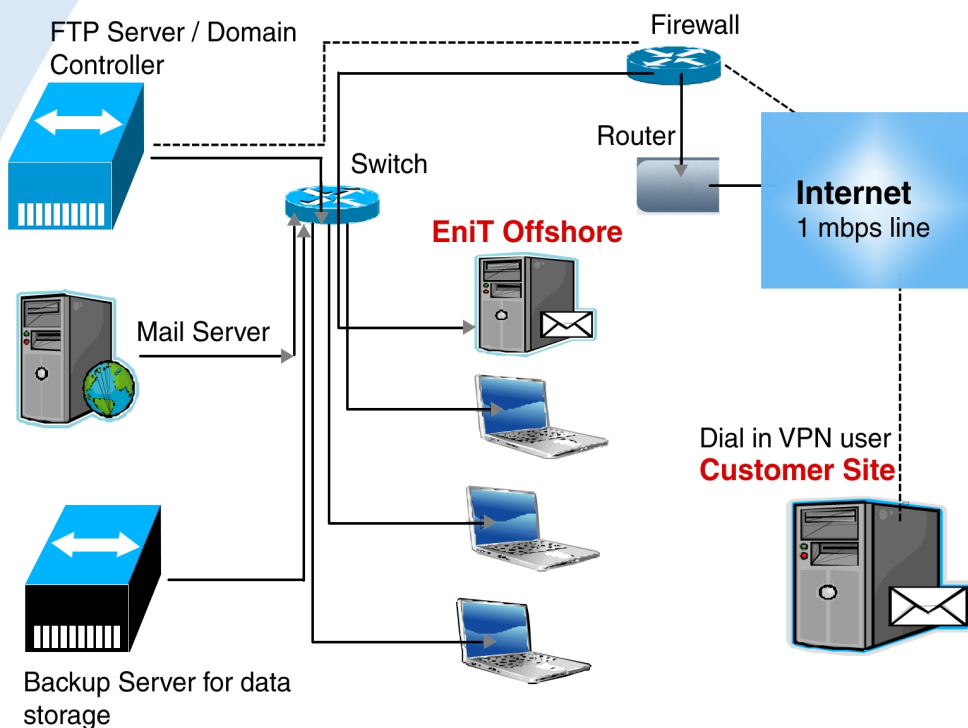


Through EniT, you can access emerging markets, expand your presence globally along with us as collaboration partners and improve your competitive advantage.

Offshoring and how we work?

The diagram shows a typical offshoring facility which provides services and solution from EniT Offshore development centre in India.

Dedicated Facility for IP/Data Security



Other Services

Apart from the core domain of Aerospace and Automotive, we also provide services in Energy and Industrial Domain.

Be it Design, Analysis or support to your core activities in these field, EniT is capable of proving itself by providing right kind of solutions based on requirements

We have engineers who have knowledge and skills to work on turbines, compressors, heavy industrial equipment, piping and system analysis etc.

*Offshoring ethics can increase profitability,
reduce risks and build trust.*

Why EniT?

Working with EniT implies working with a reliable partner and with emphasis on minute details considered to the core.



Realising Engineering

Why EniT?

- Strong Domain expertise with good organisational structure
- Regular investment in people, hardware, software & systems
- Proven project management experience
- Experience in setting up & ramping up of teams for diversified clients
- Team size: 2-5 members / 5-10 members / 10+ members
- European focus: In depth understanding of cultural & business practice

References

- Bertrandt Ingenieurbuero GmbH
- Denso Automotive deutschland GmbH
- P3 Digital services GmbH
- Ruecker Aerospace GmbH

Don't postmortem your design results.

Do it right first time.

EniT - Doing what we know better.



Realising Engineering

EniT Locations



EniT GmbH

Leopold Strasse 244
D-80807 München, Germany
Tel: +49 (0) 89-208039-156
Fax: +49 (0) 89-208039-157
Email: info@enit-gmbh.eu



EniT Limited

69, Great Hampton Street
Birmingham B18 6 EW
United Kingdom



EniT Solutions Pvt. Ltd.

#17, 1 st Floor,
Palace Road, High Grounds,
Bangalore 560052
Tel: +91 (0) 80-42664966
Fax: +91 (0) 80-42664999
Email: info@enit.in